



samoco

REEDYK PC4405EX



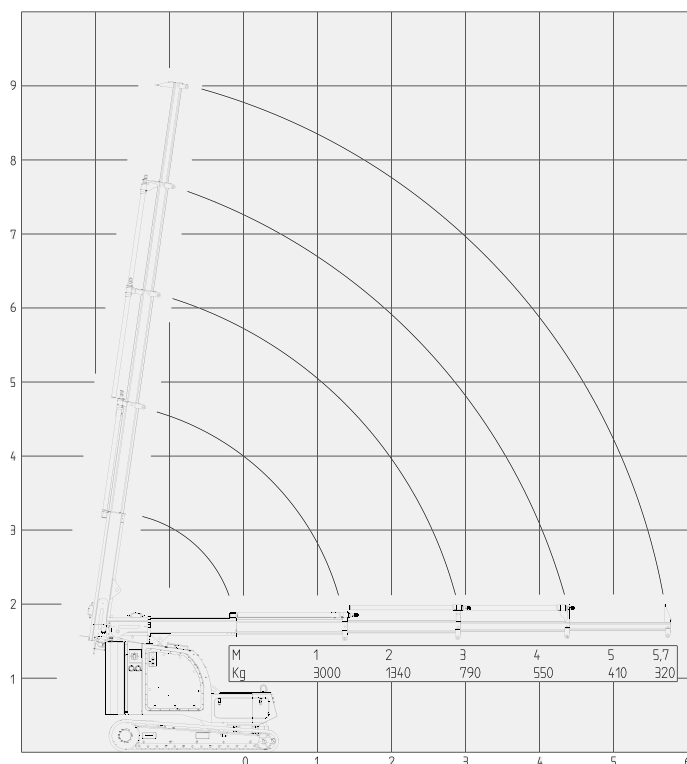
DISCOVER OUR PC4405 EX

The 3T pick-and-carry crane
for the petrochemical industry

The PC4405EX pick and carry crane is fully battery driven and developed and constructed for use in areas containing hazardous substances in accordance with ATEX standards.

At 1 meter wide, 2.49 meters in length and with a reach of 5.7 meters, this crane can reach almost anywhere. For precise positioning, this crane can swivel to two sides by 15 degrees. The robust loading platform ensures that components can be transported quickly to the desired place

Samoco NV
Vitshoekstraat 1
B-2070 Zwijndrecht
+32 3 210 23 40
info@samoco.be
www.samoco.be



PROPERTIES

Crane lifting moment:
 5 tonnes/meter
 Swivel reach: 2 x 15 degrees
 Max. height approx. 9 m
 Max. reach approx. 5.7 m
 Max. lifting load approx. 2,700 kg
 Own weight approx. 2,835 kg
 Width 100 cm
 Height 180 cm
 Length 249 cm
 ATEX – 3G 11B T3 (zone 2)
 Rubber tracks, stainless steel conveyors

STANDARD FEATURES

FULLY BATTERY-POWERED

The crane is fully battery-powered by a lithium battery pack, so it's always ready for use or for charging. You can even charge it while it is in operation

REMOTE OPERATION

Simple, logical operation. The crane responds predictably which means you feel familiar with it quickly

EASY TO TRANSPORT

The PC4405EX is easy to transport. Weighing 2,835 kg, the crane can be transported quickly and easily on a 3.5 tonne trailer.

ON SITE QUICKLY

Once on site the crane drives itself to its destination quickly. If required, it can also be positioned using a forklift truck



Solve it with skill.
Tackle it with passion.

