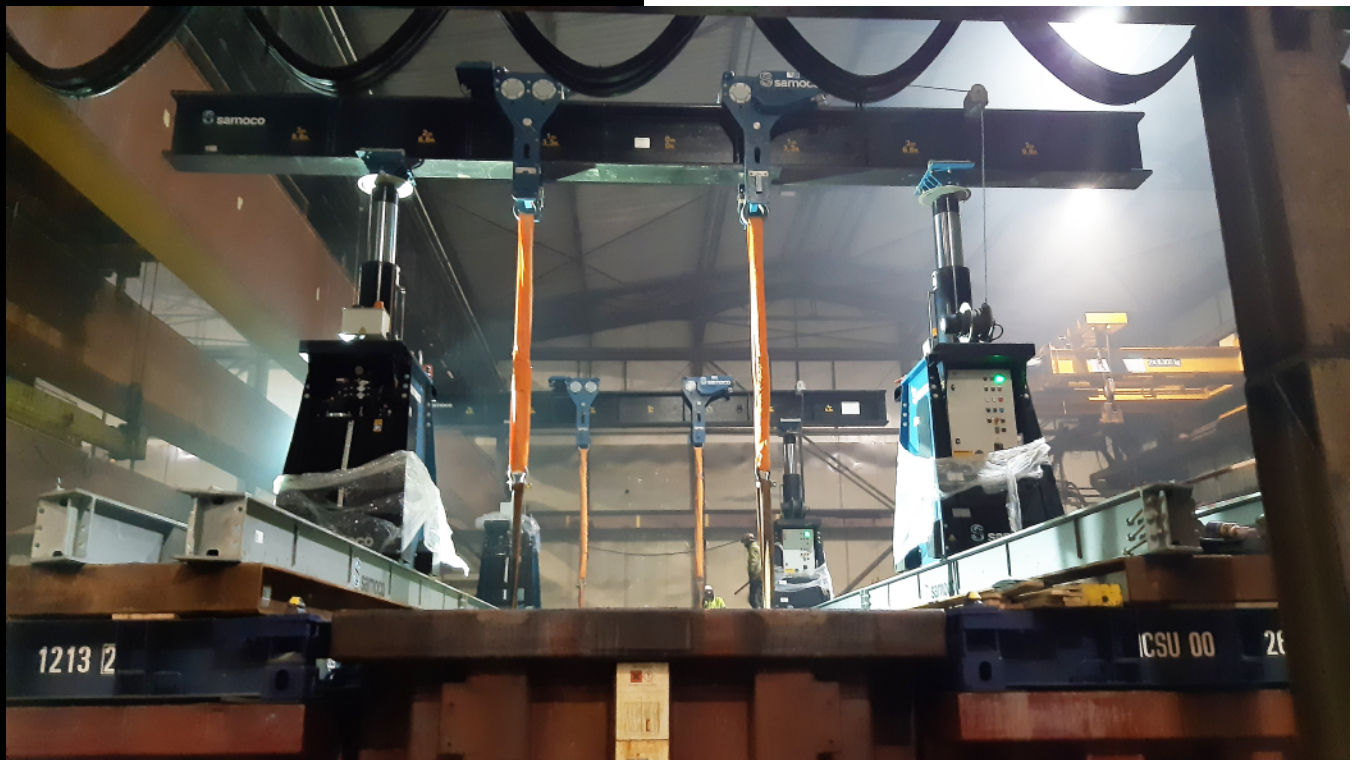




samoco

SL-200



DISCOVER OUR SL-200

**Access restricted spaces
with this high capacity,
narrow footprint gantry.**

Our SL200 is a safe, efficient way to lift and position heavy loads in applications where traditional cranes will not fit and permanent overhead structures are not an option.

This hydraulic gantry is placed on skid tracks to provide a means for moving and placing heavy loads.

The efficient SL200 Super Lift has the best-in-class control and comparable lifting capacity by utilizing telescopic cylinders offered in 2 stages.

Samoco NV
Vitshoekstraat 1
B-2070 Zwijndrecht
+32 3 210 23 40
info@samoco.be
www.samoco.be

STANDARD FEATURES

Self-contained hydraulics and electronics

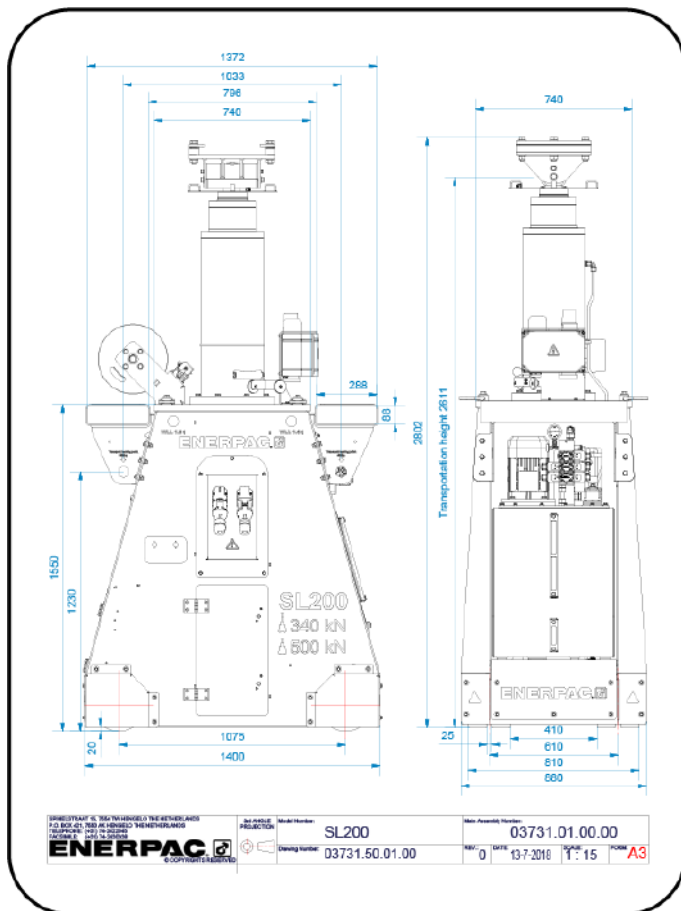
Wireless Intellilift controls

Synchronous lifting and lowering

Self-propelled wheels with synchronized travel

Full range of supplementary equipment: header beams, lifting lugs, side shift, skid tracks

Designed and tested to meet ASME B30.1-2015 safety standards



PROPERTIES

Maximum Capacity 4 Legs (metric tons) 200

Maximum Capacity 4 Legs (kN) 2000

Stage 1 Maximum Capacity (kN) 500

Stage 2 Maximum Capacity (kN) 340

Weight per Leg with Oil (kg) 2200

Retracted Height (mm) 2731

Stage 1 Maximum Height (mm) 4716

Stage 2 Maximum Height (mm) 6700

Solve it with skill.
Tackle it with passion.

